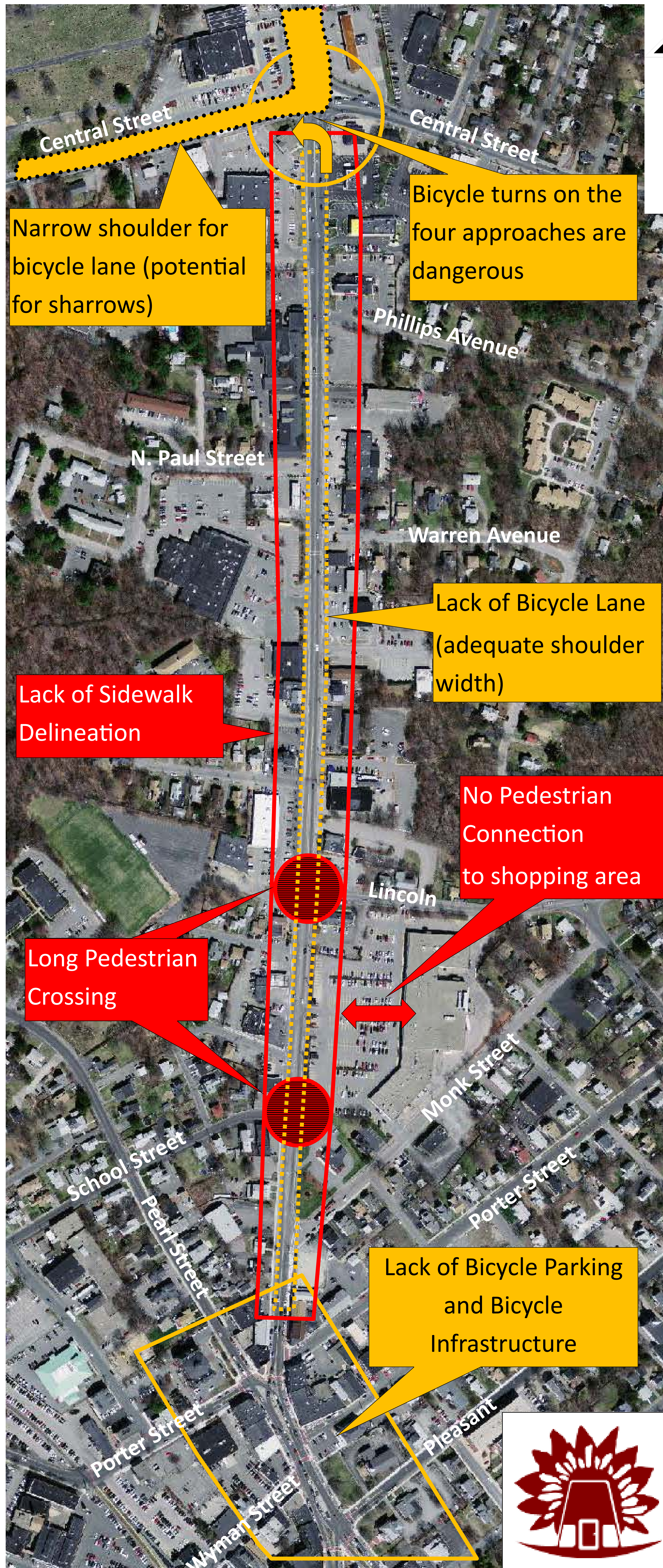


# 2012 Old Colony Bottleneck Analysis Study

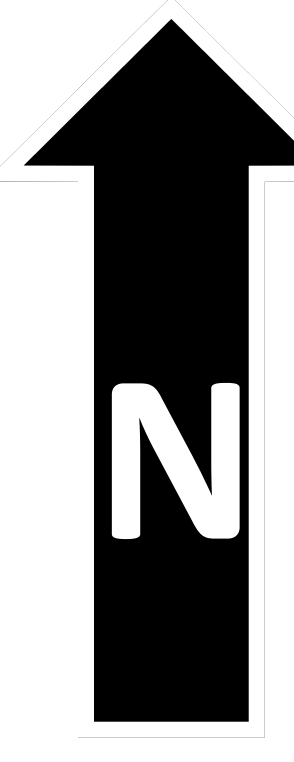
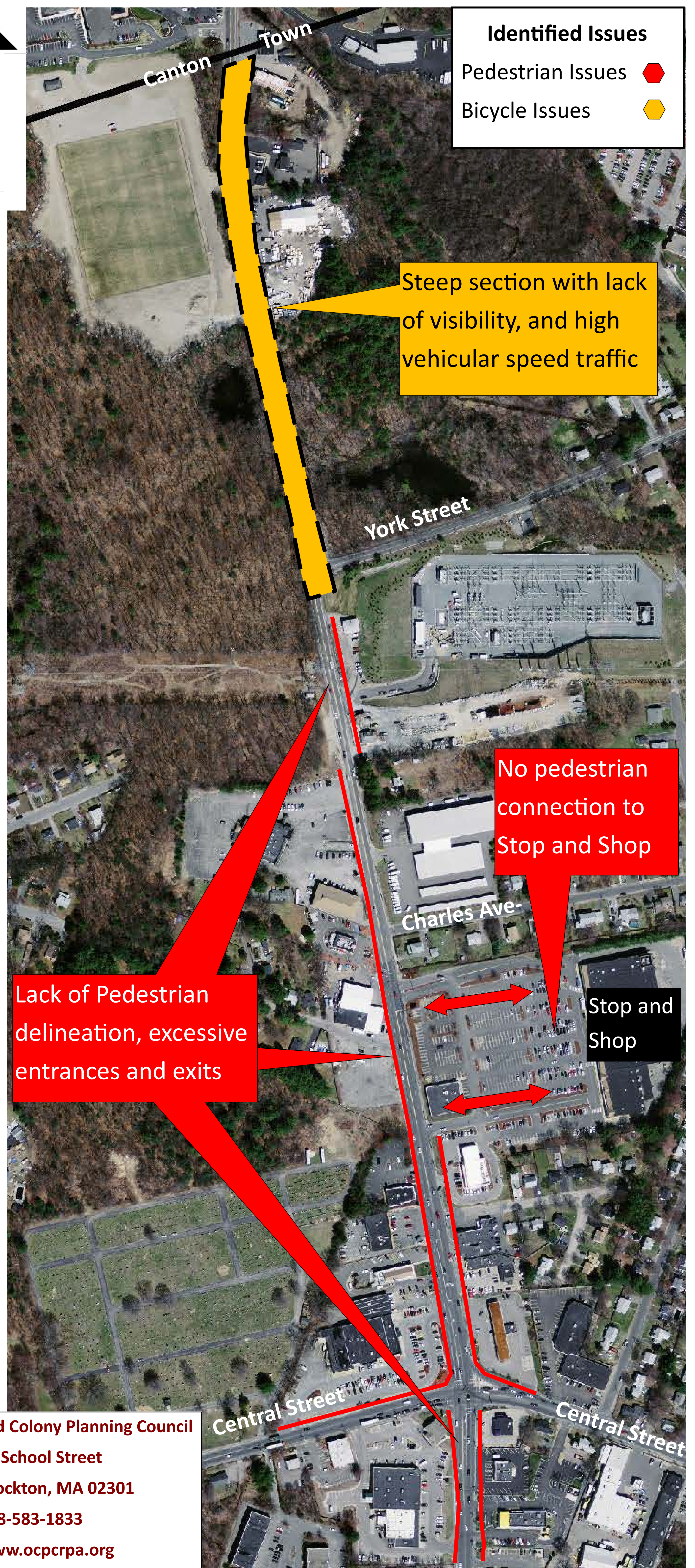
## Stoughton—Route 138 from Stoughton Square to Canton Town Line

### Bicycle and Pedestrian Existing Conditions

#### Stoughton Square to Central Street Section



#### Central Street to Canton Town Line Section



**Identified Issues**

Pedestrian Issues ●

Bicycle Issues ●



Old Colony Planning Council  
 70 School Street  
 Brockton, MA 02301  
 508-583-1833  
[www.ocpcrpa.org](http://www.ocpcrpa.org)